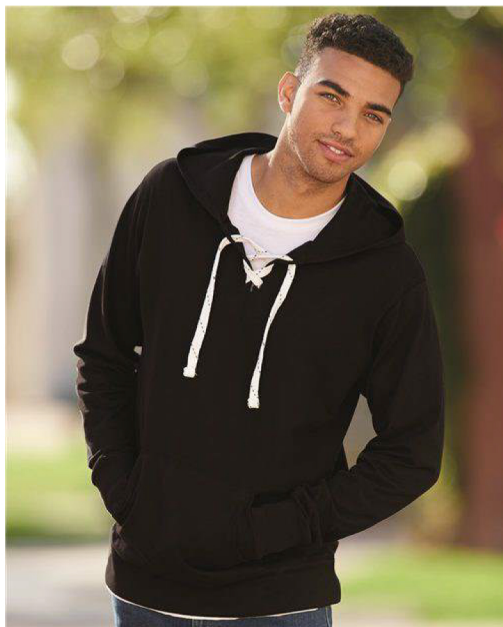
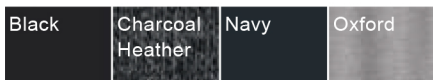


J. America - Jersey Sport Lace Hooded Pullover - 8231



- 6.5 oz., 100% ringspun cotton
- Oxford is 90/10 cotton/polyester
- Charcoal Heather is 60/40 cotton/polyester
- Split front placket with six sewn eyelets
- Flat white drawcord with grey ticking
- Front pouch pocket
- 1x1 rib cuffs, waist and side gussets
- Add interchangeable laces to this style (style 8831)

Colors



Finished Measurements

| | XXS | XS | S | M | L | XL | 2XL | 3XL |
|----------------------------------|-----|----|--------|----|--------|----|--------|-----|
| Body Length | | 27 | 28 | 29 | 30 | 31 | 32 | 33 |
| Body Width | | 18 | 19 1/2 | 21 | 22 1/2 | 24 | 25 1/2 | 27 |
| Sleeve Length (From Center Back) | | 33 | 34 | 35 | 36 | 37 | 38 | 39 |

